

PLOTMASTER™ 400

**Users Manual,
Safety Instructions &
Planting Tips**



A Product of

**Tecomate Wildlife Systems, Ltd.
Wrightsville, GA 31096**

478-864-7799 or 1-888-440-9108



We would like to thank you for
your purchase of the
PLOTMASTER™ 400

The information in this booklet is designed to provide you with a better understanding of your *PLOTMASTER™*, as well as to provide you with safety instructions and tips for planting your food plots.

If at anytime you have questions about your unit, Please call us at 1-888-440-9108. We'll be glad to answer any questions that may arise!



Plotmaster™ 400 Electric Unit



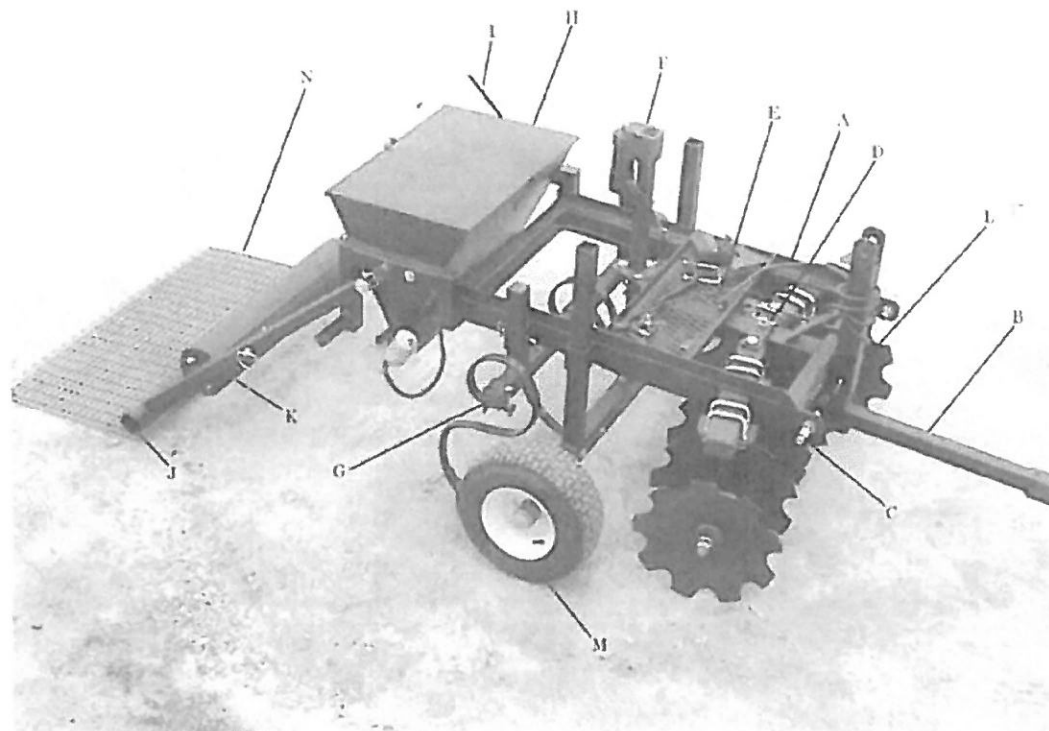
READ FIRST!!!

READ OPERATING INSTRUCTIONS CAREFULLY BEFORE USE!!

Safety and Operating Instructions:

- ⇒ **DO NOT** operate *PLOTMASTER™* over 10 MPH.
- ⇒ **DO NOT** sit or stand on the *PLOTMASTER™* while in use.
- ⇒ **DO NOT** ride on *PLOTMASTER™* at anytime.
- ⇒ Keep your feet and hands clear of *PLOTMASTER™* when raising or lowering the unit.
- ⇒ **DO NOT** put hands in Seeder attachment while in use or while seeder-motor is on.
- ⇒ Keep your Hands and Fingers clear when raising or lowering the drag and/or cultipacker to avoid pinching.
- ⇒ Recommended for use with ATVs, 300 cc or larger.
- ⇒ NOT recommended for 40 HP or larger tractors.
- ⇒ Recommended for 18 HP or larger lawn mowers.
- ⇒ **DO NOT** put lime or fertilizer in seeder attachment.
- ⇒ Maximum capacity of seeder is 50 lbs.
- ⇒ *PLOTMASTER™* is designed for off-road use only. **DO NOT** tow on public roadways!
- ⇒ **DO NOT** Operate on Inclines Greater than 10°.
- ⇒ Electrical Models are Provided with a 30 AMP Slow Blow Fuse.
- ⇒ Make sure you attach the electrical clips of the control box to the correct terminals on your battery to avoid damage to your electrical system (Red clip to positive terminal, Black clip to negative terminal.)

Diagram of the *PLOTMASTER*™ 400...



- A- Main Frame
- B- 1-Point Hitch
- C- 3-Point Hitch
- D- Adjustable Disc
- E- Tool or Carrying Rack
- F- Jack (May be Electric or Manual)
- G- Plow Attachments
- H- Electric Seeder
- I - Seed Flow Control
- J- Drag
- K- Cultipacker
- L-Set Bolt
- M-Wheel Assembly
- N- Metal Grating

Details About Your *PLOTMASTER*™ 400...

- A. The *PLOTMASTER*™ consists of a sturdy MAIN FRAME with various components and attachments that may be added or removed.

Each *PLOTMASTER*™ comes with a 1-point and 3-point hitch. The 1-point hitch has a 2" coupler which is designed to fit any 2" ball hitch. The 2" coupler can be adjusted from 1 7/8" to 2" by loosening or tightening the nut on the bottom of the coupler.

- B. The 1-POINT HITCH is designed to hook up with many types of pulling machines and vehicles. Examples are ATVs, Utility Vehicles, small tractors, large lawn-mowers, trucks, jeeps and 6x6 vehicles. Notice that the 1-point hitch has four holes for different tongue heights. You can adjust the height of the 1-point hitch by raising or lowering the 1-point hitch inside the 2 1/2" square upright receiver. Adjustment of the 1-point hitch allows the unit to be tilted forward for more pressure on the harrow disc or angled back for more pressure on the plow tips. There may be times when you may want to have more pressure on the disc or more on the plows. Using the bottom hole will apply more pressure to the disc whereas the upper holes will apply more pressure to the plow attachment.

(HINT: We have found that in hard soil keeping the unit as level as possible works best for most applications.)

If you plan to use your *PLOTMASTER*™ with a truck or cargo ATV, you may need to purchase an electrical extension cord. This extra extension will allow you to run your control box to the cab of your truck or cargo ATV.

You may also choose to have an extension for your battery hookups. We carry extra long extension cords for the batteries as well.

If you would like to add either of the extension cords to your

unit, please call our office at 1-888-440-9108.

There is a set bolt on the upright receiver which can be used to tighten the 1-point hitch inside the receiver. We have found that the unit works best if the set bolt is tightened after each adjustment of the 1-point hitch. This helps to keep the unit from wobbling side-to-side or “fish-tailing” during use.
(See “L” on diagram)

Please Note: If your unit wobbles from side-to-side or begins fish-tailing during use, there are several things you can do to eliminate the problem:

- Slow-down and reduce pulling speed (<4mph)
- Add weight to seeder.
- Tighten set bolt on 1-point hitch.
- Tighten coupler to 2” ball using set-bolt underneath coupler.
- Reduce the cutting angle of disc to light mode.
- Level the unit as much as possible using the upper holes on the 1-point hitch.
- Lower the drag and/or cultipacker behind seeder.

C. Each unit also comes with a 3-POINT HITCH which is located on the main frame. By removing the 1-point hitch completely, the *PLOTMASTER™* is ready for 3-point hook-up on the lift pins provided.

D. You will notice a pin for adjusting the angle of cut of the ADJUSTABLE DISC. There are three (3) different settings – Light Disc Mode, Medium Disc Mode, and Heavy Disc Mode. The first hole from the front of the unit is for light discing (Light Disc Mode) such as re-seeding or aerating. The middle hole, which is the optimal angle of cut for discing (Medium Disc Mode), is used for most applications with an ATV.

The third hole, which is the Heavy Disc Mode, is used for heavy, deep discing on rough ground or where the ground needs to be thoroughly broken up using the 3-point hitch on tractor.

E. The TOOL OR CARRYING RACK has multiple uses. It can carry extra bags of seed, tools, coolers and the tank for the spray attachment. You will also notice how easy it is to attach

these items using bungee cords with the expanded metal. It can also be used to attach extra plow points for your plow attachment. We have found that it may be necessary to add extra weight to the unit under certain situations, especially when discing hard or extremely rough soils. This will improve the discing and plowing of the unit.

- F. An ELECTRIC OR MANUAL JACK is attached to the wheel assembly. The jack has an 14" vertical travel that gives plenty of ground clearance. The jack allows you to adjust how deep you wish to cut by using the wheels as a depth gauge. For example, if you wish to cut 4" deep, simply raise the jack or wheel assembly 4" off the ground. Loading or pressure can be taken off the discs or plows simply by lowering the wheels. This will allow you to adjust the loading for different pulling machines.

To Operate the electric jack manually, use a 3/16" allen wrench to remove the plug in the top of the motor and a 1/4" allen wrench to turn the motor shaft located inside.

WARNINGS!!!

- ⇒ *DO NOT pull this unit on a public road or highway! The wheels on this machine are not intended for road or highway use.*
- ⇒ *When coupling the PLOTMASTER™ to the ATV, make certain the 6 wire cable has enough slack to allow for turns but not enough to be caught in the harrow discs. Too much slack will allow the cable to be cut by the discs.*

- G. The PLOW ATTACHMENT attaches to the PLOTMASTER™ behind the jack using two hitch pins located on the side of the main frame. The plow attachment has four holes for depth adjustments. The two middle adjustments work best for most applications.

The PLOTMASTER™ is delivered with three (3) plows attached to the plow attachment and two (2) extra that can be added to the plow attachment as needed.

Each plow attachment comes with three (3) different types of plow points:

1. Five (5) narrow, reversible CHISEL POINTS for hard, rough soils.
2. Five (5) medium-sized CULTIVATOR POINTS for cultivating prepared soils.
3. Five (5) 9" SWEEP PLOW POINTS for plowing cultivated soils with little or no vegetation.

(HINT: If plow points load up with vegetation, discing and plowing are reduced. The points can be cleaned simply by raising the unit slightly with the jack, backing up and the vegetation will catch underneath the tires, pulling it away from the plows.)

(HINT: The smaller chisel points work much better than the larger sweep plows for plowing if vegetation exist. If you are using five (5) plow points, removing two (2) will allow vegetation to flow through without clogging up. You can also remove the entire plow attachment if plow points continue to load up or collect too much vegetation.)

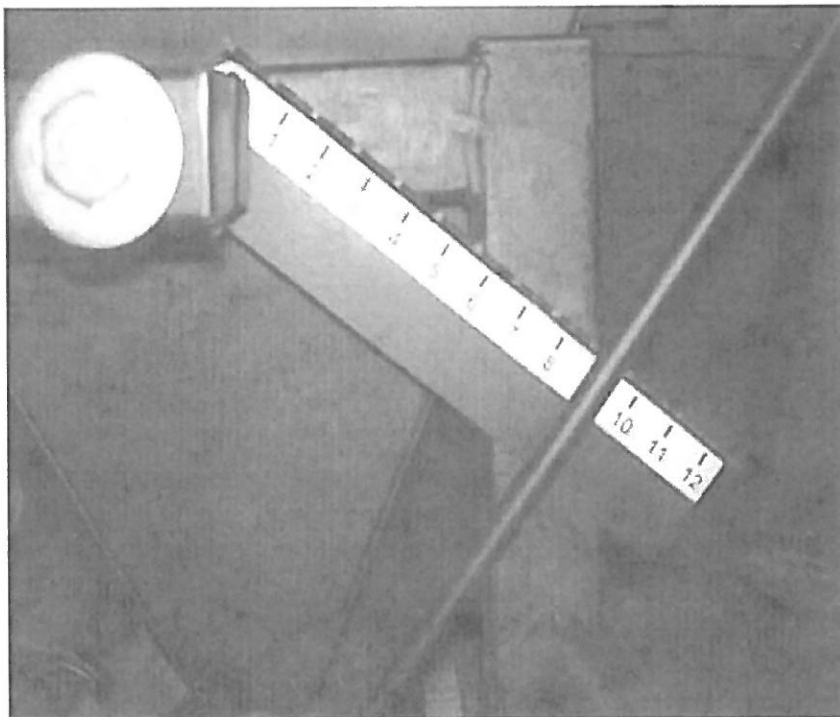
The plow attachment can be replaced with many different attachments. Some of the attachments are listed as "Other Attachments" on the following pages. To replace the plow attachment with another attachment, simply remove the hitch pins and raise your *PLOTMASTER™* to drop the plow attachment out. Slide new attachment in place, lower *PLOTMASTER™* so attachment arms slide in same receivers on the outside of the main frame. Adjust to desired holes and then replace hitch pins.

- H. Each of the units comes with an ELECTRIC SEEDER to distribute and plant seed. The seed flow control is attached directly to the seed gate. There are 12 detents (notches) that determine the amount of opening of the seed drop holes in the bottom of the seeder. Adjust the seed flow control for the size seed being dispensed. *See notes.*

- I. The SEED FLOW CONTROL (*pictured below*) is used to open the seed gate for dispensing seed. There are twelve (12) detents or settings on the seed flow control that allows for distributing different size seeds. Adjust the seed flow control to the desired size and amount of seed you want to dispense.

In the "0" position the seed gate should be fully closed. The seed gate can be adjusted by loosening the bolt that holds the lever to the seed gate. Use a 9/16" wrench for this task.

Smaller seeds will be dispensed at positions "1" through "3" and larger seeds at higher number detents.
(see helpful hints)



IMPORTANT NOTES:

- *DO NOT put more than 50 lbs. of seed in the seeder at one time. The seeder is designed to hold a maximum of 50 pounds of seed.*
- *The electric seeder was not designed to distribute lime or fertilizer. DO NOT put lime or fertilizer in the electric seeder. It will rust the seeder components and/or cause the seeder to work improperly.*
- *You can adjust the seed gate to open wider for larger seeds or close it for smaller seeds by loosening the bolt that attaches the seed flow control handle to the seed gate. Make certain the seed gate is fully closed with the seed flow control in the "0" position and retighten the set bolt.*

HELPFUL HINT: *When planting, open seed flow control one detent at a time until first seed falls out. This is your indication that this is smallest opening for that size seed. The bigger the seed, the bigger the opening.*

- J. The **DRAG** is used to level soil and to cover larger seeds such as wheat, rye, beans, peas, Lab Lab and oats. When you get ready to plant your larger seeds, simply swing the drag over behind the unit and attach the chain/springs on the bottom of the wheel assembly to the J-hooks on the drag. In this position, the drag is used to level the soil and to cover the larger seed with 1-2 inches of soil. Additional downward pressure and coverage can be obtained by connecting the hooks on the drag to the chain links closer to the wheel assembly.

Each Complete Unit comes with a **DRAG with METAL GRATING** and a **CULTIPACKER**. Both the drag and the cultipacker are interchangeable. Each Basic Unit comes with a Drag only.

- K. The **CULTIPACKER** in its forward position over the disc is used for added weight for improved discing and plowing. For optimal use, you should fill the cultipacker with sand. The cultipacker has a bung cap located on the end of the cultipacker which can be opened to add sand. The cultipacker should be removed from the unit and stood on end with bung hole on top.

Fill cultipacker with maximum volume and replace bung.

When you get ready to plant your small seeds, simply swing the cultipacker over behind the unit and attach the chain/springs on the bottom of the wheel assembly to the hooks on the cultipacker provided. In this position, the cultipacker is used to compress soil and to roll over smaller seeds to ensure a firm seed bed. This also ensures the seeds are not buried too deep.

Additional downward pressure and compaction can be obtained by connecting the hooks on the cultipacker to the chain links that nearer to the wheel assembly. Pressure can be adjusted by hooking different chain links to the J-hooks.

IMPORTANT: KEEP YOUR HANDS AND FINGERS CLEAR WHEN RAISING OR LOWERING THE DRAG AND/OR CULTIPACKER TO AVOID PINCHING.

- L. **SET BOLT.** See diagram or description in section “B”.
- M. The Plotmaster™ is shipped with the wheels strapped to the pallet. To attach the wheels to the **WHEEL ASSEMBLY**, insert the square tubing of each wheel into the tubing of the wheel assembly and secure with the 2-3/8”x3-1/2” bolts shipped in the plastic bag located in the seed box. Tighten the nylock nuts securely.
- N. **METAL GRATING.** See diagram or description in section “J”.

OTHER ATTACHMENTS:

- ♦ **COMPACTOR:** This attachment is used to compact soils and prepare a smooth seed bed prior to planting small seeds such as clover or grass seed. This is an important step to ensure that these small seeds are not planted too deep. Small seed such as chicory and clover should never be planted more than ¼” deep.
- **SCRAPE BLADE:** This attachment is used to level the soil, scrape driveways, and has been used to remove manure from goat pens and chicken houses. The uses are endless.

- **RAKE:** This attachment rakes and removes unwanted vegetation and debris before plowing. It can also be used to rake leaves, remove pine straw, groom driveways, and to dethatch lawns to stimulate growth of grass. It works great for making trails to and from your deer stands for less noise walking in and out of the woods to your stand.
- **MOLDBOARD PLOW:** This 10" plow is used for turning under new ground and for establishing fire breaks in wooded areas.

IMPORTANT NOTE: When using this plow, make sure the landslide (bottom part of plow) is level or parallel with the ground. This will ensure that the plow is cutting at the optimal angle of cut. You can adjust this angle by raising or lowering the height of the 1-point hitch.

- **GRAIN DRILL:** This grain drill attaches to the angle iron on the bottom of the electric seeder using two bolts and wing nuts. The grain drill includes five flexible hoses that funnel seed down directly behind each of the plow tips. The grain drill allows you to plant seeds in distinct rows. Row width can be adjusted by moving the S-tines on the plow attachment to the desired row width. This attachment is great for planting large seeds in rows such as corn, soybeans, Lab Lab or chufa.
- **The ROLLING BASKET** can be used for leveling clumpy soils and for covering seeds such as wheat, oats, rye, and peas. By attaching the chain springs on the bottom of the wheel assembly to the hooks on the Rolling Basket, you can adjust how much pressure is applied. This downward pressure will directly influence how deep seeds will be covered. It will also influence how well the basket will break-up dirt clods or clumpy soil. The Rolling Basket can also be used to manicure the soil. By manicuring the soil, you leave a level, soft seed bed for planting small seeds such as grasses. After dropping your seed, the cultipacker should be used to ensure a level, firm seed bed.

IMPORTANT MAINTENANCE: Grease the cultipacker bearings every four (4) hours of operation. Service the wheel bearings by cleaning and repacking the bearings once each year. All nuts and bolts should be checked for tightness prior to each use. To improve the pulling capability of your ATV, you can add extra weight to the front/back carrying racks, use more aggressive tire threads and/or remove a small amount of air from the tires.

More Helpful Hints ...

Soil Preparation

Once the location of your food plot is determined, you are ready to begin preparing the soil for planting. You should always mow, spray with herbicide, or use other techniques to remove unwanted grasses and vegetation prior to discing or plowing the soil. This step will eliminate competition between wanted and unwanted plants. Reduction of vegetation will also improve discing and plowing, taking less time and doing a better job. Having some soil moisture will also increase discing and plowing capabilities.

Aggressiveness of cut will vary depending on soil type. There are also four depth adjustments on the plow attachment. For normal cut, we use the second hole from the bottom. If soil is hard, you may want to put more pressure on the plow tips. More pressure can be added by dropping the plows and using the third or fourth adjustment holes. If you have really hard soils, we suggest putting the disc in the second or third position and using the chisel plow points on the plow attachment. The chisel plow points will dig down easier to break-up hard soils. If vegetation is clogging up the plow attachments you may also want to use the chisel points, since they are narrow they will let more debris pass through. In grown up areas where mowing is not possible, the second and fourth plow tines can be removed and build-up should not occur. The plow attachment may also be completely removed when only discing is required.

While preparing soils for planting, the cultipacker should be in the raised position. When plowing hard soils, the cultipacker, filled with sand, will add extra weight directly over the disc, further helping the *PLOTMASTER*™ cut those hard soils.

Planting

Once the ground has been prepared for planting, the **PLOTMASTER™** unit is designed to make planting a “one-pass” operation. The unit should be level. This will make all parts work together and plant properly. The disc should be in the “Light” or “Medium” Disc Mode.

The seeder can be adjusted to plant seeds ranging from clover size to bean size seed. The seed gate is adjusted using a detented seed flow control lever. There are 12 detents that lock the seed gate into place, making seed rates consistent. The smaller settings are ideal for planting small seeds such as clover, chicory, or alfalfa. The larger settings are great for planting larger seeds such as wheat, oats, rye, grain sorghum, corn, peas and Lab Lab. Seeding / Application rates will vary depending on how fast you pull the Plotmaster™. Normal planting speed in 5-8 mph.

Planting previously planted areas is a “one-pass” operation if little or no vegetation exist. The disc should be in the Light or Medium Disc Mode and the plow attachment in the second or third position. Apply desired pressure to the drag or cultipacker using the spring and chain assembly. Adjust the seed flow control lever to the proper setting by opening the seed gate one detent at a time until first seed falls out. The seed will begin falling out when seeder motor is turned on.

You are now ready to begin planting!

Tecomate Wildlife Systems, Ltd. provides a one-year warranty against any manufacturer's defects.

**Be sure to fill out and return your warranty card.
The serial number is on the gold tag on the main frame.**

Let Us Hear From You!!!

The *PLOTMASTER*[™] makes planting food plots and gardens easy and fun. The *PLOTMASTER*[™] allows you to plant areas you could never plant before. Planting food plots close to established bedding areas, where large bucks spend most of their time, will increase your chances of taking a buck-of-a-lifetime.

The *PLOTMASTER*[™] is truly the most versatile planting machine on the market. SAFETY and PROPER USE of the *PLOTMASTER*[™] should ensure many years of quality service.

We know that the *PLOTMASTER*[™] will be used in a variety of ways. We would like to hear your innovative ideas and how well it has performed for you.

Drop us a line at: Tecomate Wildlife Systems, Ltd.
 PO Box 111
 Wrightsville, GA 31096

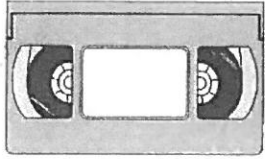
We again thank you for your purchase and hope that you enjoy your *PLOTMASTER*[™] for many years to come.

Wishing You the Very Best,

Tecomate Wildlife Systems, Ltd.



PLOTMASTER[™] inventor, Blaine Burley, with
HUGE 14-point buck harvested in small plot. .



VIDEO OFFER!

“PLOTING FOR WILDLIFE”

HOW TO CREATE WILDLIFE FOOD PLOTS
A Comprehensive Food Plot Video

“How to Create Food plots” is a comprehensive food plot video which contains a wealth of information on food plot planning, site selections, site preparation, equipment requirements, seed selection, food plot planting, liming, fertilization and much more.

Only \$19.95 + \$4.95 Shipping and Handling.

Mastercard and Visa cards accepted.

Orders may be placed by calling Tecomate Wildlife Systems, Ltd. at 1-888-440-9108 or by sending a check or money order to:

**Tecomate Wildlife Systems, Ltd.
PO Box 111
Wrightsville, GA 31096**